

# VACATION BIBLE SCHOOL • JUNE 19-23 • 6-9PM

Pre-K - completed 5<sup>TH</sup> Grade

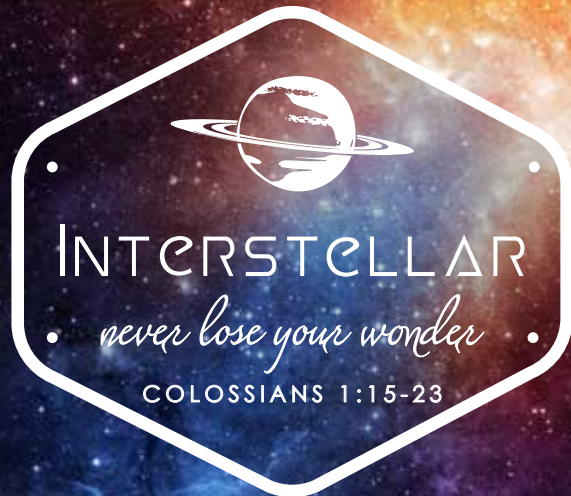


**STUDENTS, KIDS, & VOLUNTEERS** register at [ibchighland.org/vbs](http://ibchighland.org/vbs)

Parents who would like to be on campus will need to serve as a volunteer.

Volunteers need to sign up online NOW through Sunday, June 4.

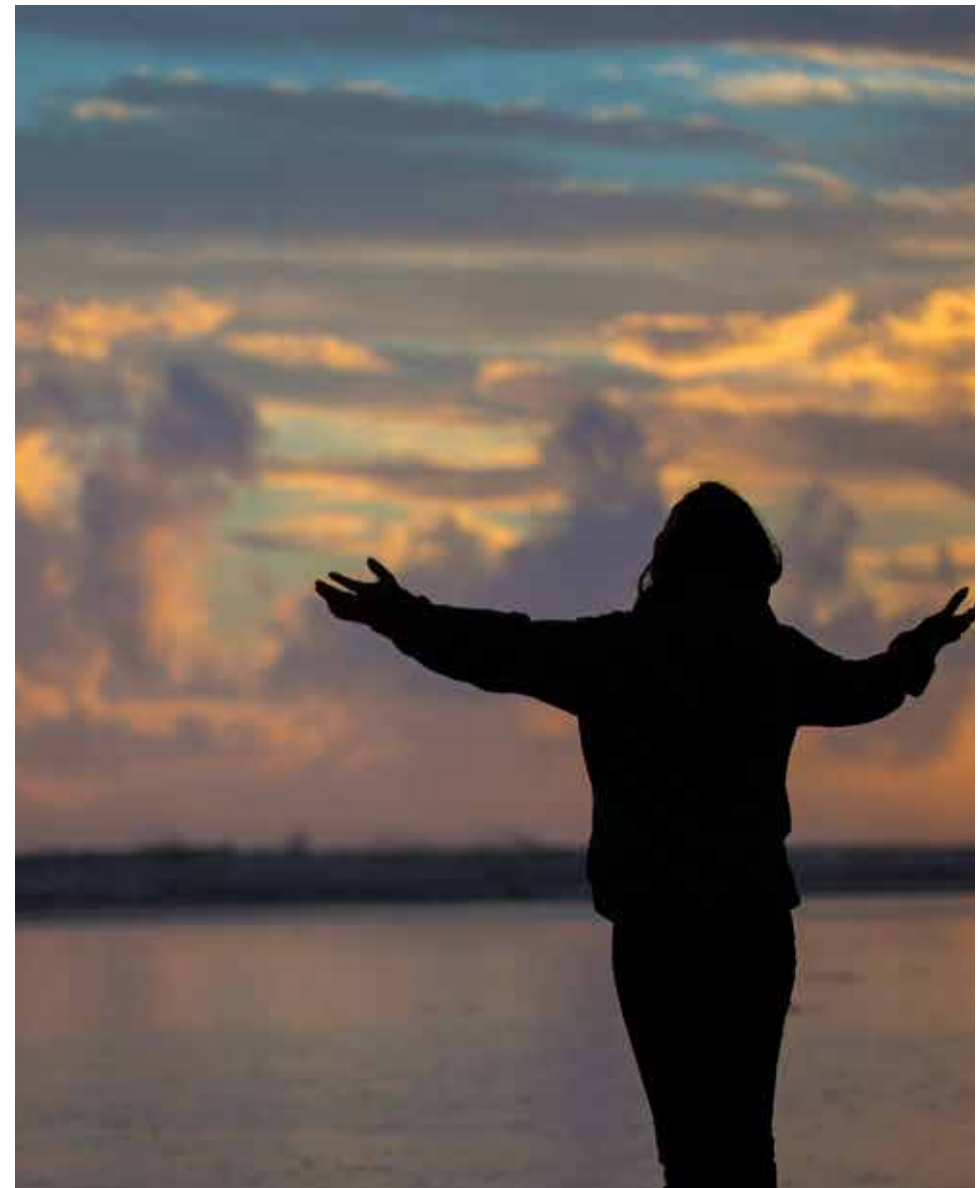
# MIDDLE SCHOOL RALLY • JUNE 19-23 • 6-9PM



6<sup>TH</sup> - 8<sup>TH</sup> GRADE STUDENTS

WEEKLY BIBLE READING S - Job 34; M - Job 35-37; T - Job 38-39;  
W - Job 40-42; TH - Psalms 1-6; F - Psalms 7-12; S - Psalms 13-15

28355 Base Line, Highland, CA 92346 | (909) 425-1777 | [ibchighland.org](http://ibchighland.org)



Immanuel

**MAY 28, 2017**

Morning Service – 9:15 & 10:50

Dr. Rob Zinn, Pastor

*The Ministry of Giving*

II Corinthians 9:6

# SEND KIDS TO CAMP

## The Giving Wall Kid's Camp Fundraiser SUNDAY, JUNE 4

LOCATIONS: Upstairs A Bldg  
Upstairs D Bldg  
and the Pavilion

### HERE'S WHAT TO DO:

1. Take an envelope (or more than one) off the wall that has an amount on it that you want to donate.
2. Put a check or cash in the amount of money that matches the number on the envelope.
3. Take out the card that is in the envelope. Please pray for the camper or counselor who is listed.
4. Turn in your donation envelope either to the Camp Parent Helper, the offering plate during service, or to the Church Office during the week.

The envelopes will have a place on them for your name and address if you would like to receive tax credit for your donation. Don't forget – the card you took out of the envelope has the name of a camper or counselor from Immanuel on it who you can pray for as they prepare for and head off to camp.

## SUNDAY

8:00AM Bible Study Communities for Adults  
Starting Point: Baptism Class - *Baptistry*

SCRIP SALES 8:45-9:15AM - *Welcome Center*

9:15AM MORNING WORSHIP  
Bible Study Communities for all ages  
KW (Kids Worship) 2<sup>nd</sup>-5<sup>th</sup> grade - *D112*  
Starting Point: Baptism Class - *Baptistry*

SCRIP SALES 10:30-11:00AM - *Welcome Center*

10:50AM MORNING WORSHIP  
Bible Study Communities

CHURCH OFFICE CLOSED  
MEMORIAL DAY  
MONDAY, MAY 29

## WEDNESDAY

6:30AM Men's Prayer Meeting - *Fellowship Hall*  
SCRIP SALES 1:00-3:00PM - *Church Office (Monday-Friday)*

5:00PM Fellowship Dinner - *Fellowship Hall*  
MENU: Chicken Alfredo or Oven-fried Chicken  
Youth "Challengers" - *D208 (boys)*

6:00PM Family Worship w/Pastor - *Worship Center*  
Children's Choir - *Petite Praisers - D108,*  
*Kids Under Construction - D103, Celebration Kids - D112*  
Overcomers - *D214*

6:50PM Discipleship Classes - *Schedules are in the literature rack.*  
SOS: Support Group for Survivors of Suicide - *D219*  
Middle School - *D213*  
High School - *F Bldg. East*  
Choir - *Choir Room*  
Orchestra - *Worship Center*  
Girls in Action - *Fellowship Hall*  
Royal Ambassadors - *Fellowship Hall*

8:10PM Adult Exceptional Ministries - *A202*

## News & Events

### PASTOR'S GUEST RECEPTION | TODAY | 10:30AM & 12:10PM | W2

We will be holding a Guest Reception for first-time guests following the morning Worship Service. Please stop by room W2 (across the hall from the Baptistry) to meet Pastor.

### SALT & LIGHT | TODAY | PAVILION

Stop by the Pavilion today to sign postcards of congratulations and encouragement for Justice Neil Gorsuch, newly appointed US Supreme Court Justice, and Ambassador Nicky Haley, newly appointed U.S. Ambassador to the United Nations.

### MEN'S RETREAT | JUNE 2 - 4 | APACHE PINES CAMPGROUND, CACHUMA LAKE

A great time of fun, fellowship, and worship with Pastor Ben. More information and sign ups available today in the Pavilion.

### HEART-2-HEART MENTORING ORIENTATION COFFEE | SAT, JUNE 3, 8:30AM | D112

Women of all ages join us in a one-on-one mentoring friendship with another woman in our church. Register at [ibchighland.org/wm](http://ibchighland.org/wm).

### DEACONS MEETING | SUN, JUNE 4 | 3:30PM | A208

### GRADUATE RECOGNITION SUNDAY | JUNE 4 | 9:15 & 10:50AM

### COMMUNITY BLOCK PARTY PRE-EVENT MEETING | SUN, JUNE 4 | 12:15PM | W5

Churches helping the community, block party for San Bernardino neighborhood. Contact Tracy Johnson at [tjohnson@ibchighland.org](mailto:tjohnson@ibchighland.org) for more information.

### FIBROMYALGIA (LIVING WITH CHRONIC PAIN) | WED, JUNE 14 | 5:00PM | D228

They meet the second Wednesday. If you or a loved one has been diagnosed with fibromyalgia, rheumatoid arthritis, or chronic pain, join our Christ-centered support group.

**SCRIP VOLUNTEERS NEEDED** – Volunteers are needed to sell scrip for Sunday morning at 10:30AM. Contact Kate in the Church Office for more information.

**PART-TIME CUSTODIAN POSITION** – Opening for a custodian to assist with cleaning and maintaining our buildings 20 hours per week. To apply, fill out an application in the Church Office during the week.

*Text to Give* – Immanuel offers a text to tithe option! Just text the amount you'd like to give to (909) 453-4050. Specify a fund by adding the fund name after the amount. When you send your first text, you'll receive instructions for setting up an account and entering your payment information. Contact Kate DeSantis with questions.

*Join Immanuel* – When the Pastor gives an invitation at the close of one of our morning worship services, please walk to one of our ministers and he will direct you. Ways to become a member of Immanuel:

- By baptism after you have received Jesus Christ into your life as Lord and Savior.
- Transfer your letter of membership from another Baptist church.
- Come by statement of faith indicating you have received Jesus Christ and have been baptized by immersion by a church of like faith and order.